



ester & erik

COLOUR CATALOGUE

SPRING/SUMMER 2025

## High-quality candles

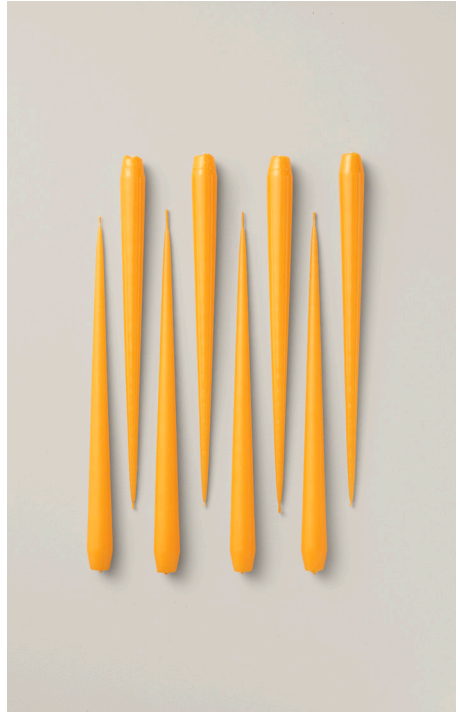
coloured by hand in Silkeborg, Denmark.

Every single ester & erik candle is a small piece of genuine craftsmanship. A natural product that is beautiful to look at, made with care and produced from the purest wax available.

Our candles are coloured by hand in 97 elegant colours to tastefully light up any season and occasion.

We are continually developing new shades and tints, ensuring you can always find just what you are looking for in our large colour universe.

## NEW 2025 COLOUR



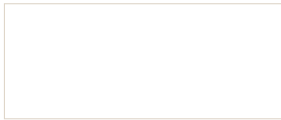
## SPRING/SUMMER



NO. 85  
MANGO

Warm and vibrant golden yellow  
with a hint of orange

## THE LIGHT NEUTRALS



NO. 31  
**PURE WHITE**

The clean lustrous universal  
white



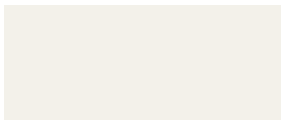
NO. 10  
**SILKY**

Delightful timeless warm  
toned off-white



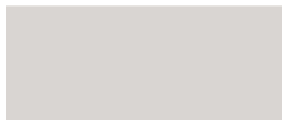
NO. 13  
**ELDERFLOWER**

Luminous off-white with a slightly  
yellowish hue



NO. 06  
**IVORY**

Enveloping white with a discreet  
greyish-beige note



NO. 21  
**WHITE ASH**

Misty white-grey, with fine  
rose note



NO. 22  
**LINEN GREY**

Cold smoky light-medium  
grey-beige

## THE WARM NATURALS



NO. 11  
**ICE LATTE**  
Creamy beige with a calm  
appearance



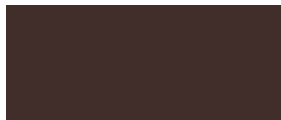
NO. 18  
**NOUGAT NOTE**  
Delicate cold neutral medium  
beige-brown



NO. 24  
**SOFT CLAY**  
Fine-grained medium toned  
earth brown



NO. 25  
**HAZELNUT**  
Intensely natural warm soft brown



NO. 79  
**ESPRESSO**  
Concentrated coffee bean brown,  
almost black



NO. 77  
**CAVIAR**  
Refined greyish-green with  
brownish overtone

# THE COLD SHADES



NO. 09  
**OYSTER PEARL**  
Subtle light-medium shadowy  
purplish-grey



NO. 09/2  
**ZINC PEARL**  
Elegant shadowy purplish-grey,  
deeper than no. 09



NO. 42  
**MUTED MAUVE**  
Dark greyish-mauve with warm  
cloudy shading



NO. 50  
**AUBERGINE**  
Intensely blackened  
purplish-brown



NO. 75  
**RAW BLACK**  
The elegant true black



NO. 74  
**DARK SLATE**  
The chic dark anthracite grey



NO. 64  
**STEEL BLUE**  
Medium-dark grey with  
hints of blue



NO. 71  
**CONCRETE**  
Neutral stone-cool urban  
mid-grey



NO. 92  
**SILVER METALLIC**  
Clean silvery coating with  
discreet shine

# THE BLUISH



NO. 83  
**DUSTY BLUE**  
Soothing blue with subtle  
greyish shading



NO. 59  
**SKY BLUE**  
The airy overcast light blue



NO. 37  
**MOON BLUE**  
Muted relaxing mid-tone blue



NO. 28  
**ROYAL NAVY**  
The classic luminous  
dark blue



NO. 48  
**CORNFLOWER**  
Illuminated electric  
cobalt blue

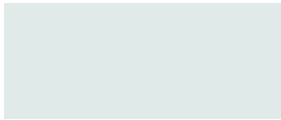


NO. 49  
**DEEP BLUE**  
Intense yet luminous  
oceanic blue dye



NO. 05  
**ICY LAVENDER**  
Blue purplish with cold  
greyish shading

## THE SOFTER GREENS



NO. 81  
**ARCTIC BREEZE**  
Barely tinted, frosty and airy  
bluish-green



NO. 67  
**JADE STONE**  
Discreet bluish-toned dusty  
mineral green



NO. 02  
**AGAVE**  
Misty medium-dark, bluish-green  
mixture



NO. 70  
**GREEN SOIL**  
Refined dusty medium-dark  
khaki green



NO. 63  
**DEEP FOREST**  
Dense plant life blackened  
green-brown



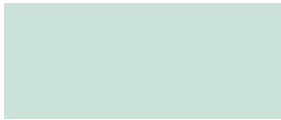
NO. 78  
**OLIVE GLOW**  
Luminous olive green with  
yellow overtones



NO. 69  
**ARTICHOKE**  
Muted elegant, neutral light  
tinted khaki



# THE GREENISH



NO. 03  
**WATER MINT**

Washed-out mint green with  
yellow hue



NO. 66  
**EUCALYPTUS**

Muted mid-tone vegetal green  
with yellow hue



NO. 35  
**APPLE BITE**

Bright energizing green on the  
yellow side



NO. 62  
**CUT GRASS**

Lively mid-toned yellowish  
grass green



NO. 58  
**MARBLE GREEN**

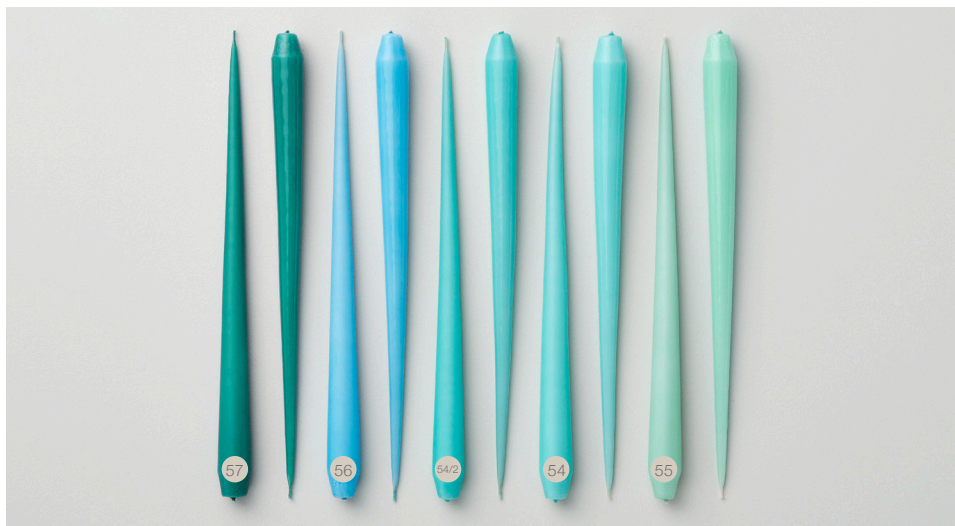
The timeless mineral green,  
slightly bluish



NO. 60  
**NOBLE PINE**

The iconic dark bluish-green  
pine needle

## THE TURQUOISE-MINTY



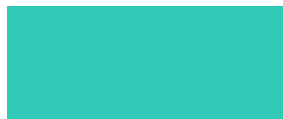
NO. 57  
TEAL TAN

Saturated teal, midway in  
blue and green



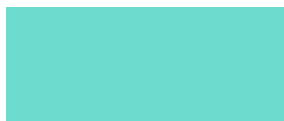
NO. 56  
TURQUOISE

Truly turquoise stone  
pigmented blue



NO. 54/2  
DEEP LAGOON

Vibrant aquatic turquoise green,  
darker than no. 54



NO. 54  
LIMPID LAGOON

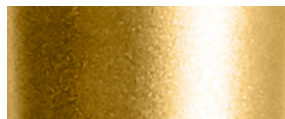
Glowing aquatic turquoise  
green clarity



NO. 55  
COOL MINT

Refreshing luminous  
minty green

# THE YELLOWISH



NO. 90  
**GOLD METALLIC**

Warm gold shimmer, as wrapped  
gold leaf



NO. 27  
**ALMOND BUTTER**

Soothing brown with a soft  
camel hue



NO. 04  
**SUNGLOW**

Cheerful orangey yellow reflecting  
sunshine without blinding



NO. 14/2  
**GINGER**

Natural medium yellow-beige,  
warmer than no. 14



NO. 14  
**PALE GINGER**

Softened natural light  
yellow-beige



NO. 76/2  
**WARM AMBER**

Resin yellow in brownish tint, more  
saturated than no. 76



NO. 76  
**AMBER**

Muted aged resin yellow  
with golden luster



NO. 43  
**HONEY BALM**

Muted warm yellow flowing  
as bee-wax



NO. 85  
**MANGO**

Warm and vibrant golden yellow  
with a hint of orange

# THE EARTHY NATURALS



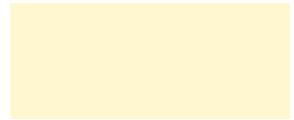
NO. 15/2  
**LEMON**

Warm pure lemony yellow,  
more dense than no. 15



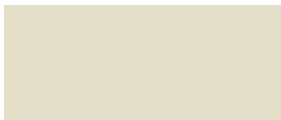
NO. 15  
**LEMON DROP**

Glowing glazed vitamin  
lemony yellow



NO. 17  
**BUTTERMILK**

Creamy glowing yellow  
pastel



NO. 61  
**LINDEN BLOOM**

Mildly acidic greenish-  
yellow pastel



NO. 68  
**WASABI**

Diluted fresh wasabi, mixing green  
and yellow



NO. 68/2  
**PURE WASABI**

Vibrant fresh green-yellow wasabi,  
darker than no. 68



NO. 73  
**SEAWEED**

Underwater algae hue of brownish  
green-yellow



NO. 23  
**RAW TOFFEE**

Truly rich natural burnt brown  
with orangey note

# THE ROSY ORANGEY



NO. 72  
**TERRA COTTA**  
Burnt medium-dark warm  
reddish ochre



NO. 20  
**ROSY CARAMEL**  
Delicately softened  
brownish-rosa beige



NO. 26  
**CORAL REEF**  
Refined neon coral with pink  
undertones



NO. 29  
**ROSEHIP**  
Warm shaded reddish-rosa  
with coral note



NO. 80  
**AGED RUST**  
Dark iron oxide reddish-brown



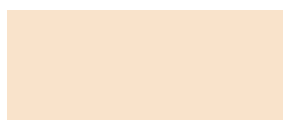
NO. 16/2  
**VIVID ORANGE**  
Orange freshness more  
concentrated than no. 16



NO. 16  
**MILD ORANGE**  
Vibrant classic orange freshness

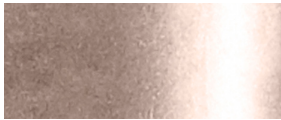


NO. 19/2  
**MELON**  
Luminous subtle orange,  
darker than no. 19



NO. 19  
**MELON SORBET**  
Frozen pastel infused in  
subtle orange

## THE SOFT PINKS



NO. 94  
**CHAMPAGNE METALLIC**

Semi-warm shine with subtle  
rose reflection



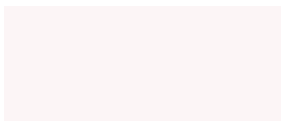
NO. 84  
**WINTER ROSE**

Muted rose with warm purplish-brown  
undertones



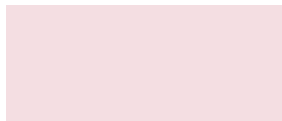
NO. 52  
**SOFT ROSE**

Drained rose-mauve with  
greyish overtone



NO. 51  
**ROSEWATER**

Delicate warm rosa note,  
barely perceptible



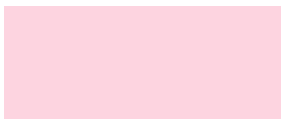
NO. 38  
**ROSE QUARTZ**

Mild and comfy  
softened pink



NO. 39  
**OLD ROSE**

Porous powdered, blushing  
medium rosa



NO. 40  
**CHERRY BLOOM**

Glowing pale pink,  
symbolizing spring



## THE PINK-REDS



NO. 41  
CLEAR PINK

Lustrous cold light  
magenta pink



NO. 41/2  
DEEP PINK

Joyful magenta pink, more  
intense than no. 41



NO. 82  
RASPBERRY

Rich-toned berry red with  
bluish note



NO. 30  
TRUE RED

The intensely vibrant  
bright red



NO. 33  
SAFFRON DUST

Warm red with a slight  
orangey tinge



NO. 36  
WINTER BERRY

The celebrating traditional  
deeper red

## THE DEEP PURPLE-REDS



NO. 44  
WINE

Elegant crushed grape  
burgundy-red



NO. 44/2  
DEEP WINE

The full-bodied burgundy-red,  
darker than no. 44



NO. 46/2  
DARK PLUM

Saturated purple-plum,  
deeper than no. 46



NO. 46  
PLUM SYRUP

Intensely luminous  
purple-plum



NO. 45  
WILD HEATHER

Muted medium-dark  
pinkish-mauve



NO. 34  
FUCHSIA

Lush purplish-pink  
blossom glow



## THE PURPLISH



NO. 47  
DUSTY LILAC

Veiled lilac with subtle blueish note



NO. 07  
CROCUS DELIGHT

Luminous wildflower purple  
with pinkish hue



NO. 12  
AIRY VIOLET

Cold and crystal clear  
violet pastel



NO. 08  
AMETHYST

Powerful violet loaded  
with blue



NO. 08/2  
DARK AMETHYST

Blackened cold violet,  
darker than no. 08

# RELAUNCH



NO. 95  
VELVET MATT BLACK

Deep and sophisticated black  
with a velvety appearance

All ester & erik candles are produced at our factory in Silkeborg, Denmark. Here, the entire production line is organised around the fact that two factors are key to producing well-performing candles: the quality of the raw materials and the final appearance of the candles.

